

# SIRIUS

LED ceilinglamp



**Item no: 3833610, 3833620, 38333-01, 38333-02**

## Productspecification

<b>Item no:</b>	3833610, 3833620, 38333-01 38333-02
<b>Dimensions:</b>	1204x56x75 (mm)
<b>CCT:</b>	3000K
<b>Lumen output:</b>	5150 lm
<b>Lumen per watt:</b>	100 lm/w
<b>Power:</b>	50W
<b>Voltage input:</b>	AC 220-240V
<b>Power Factor:</b>	>0,9
<b>Driver:</b>	Lifud DALI driver w. push-dim (item: LF-GSD40YE)
<b>Dimmable:</b>	Push-dim/DALI
<b>Installation:</b>	5x0,75 mm <sup>2</sup> , halogen-free cable, L=2500 mm, color: White
<b>Material:</b>	Extruded aluminum and steel metal
<b>Assembly:</b>	Suspension-wire L=1,5 m
<b>Beam ange:</b>	120°
<b>Color:</b>	White ( RAL9016 )/Black ( RAL9005 )
<b>CRI:</b>	>80
<b>Light distribution:</b>	Up- & downlight, 30/70 %
<b>UGR:</b>	UGR <19
<b>SDCM:</b>	3
<b>IP-rating:</b>	IP40
<b>Lumen maintenance:</b>	50000H, L80 B10
<b>Safety class:</b>	Klass 1
<b>Guaranty</b>	5 Year product guaranty -5 Year guaranty electric drivers
<b>Certificate:</b>	CE, RoHS

## **Safety instructions**

To be sure that you are using and installing the luminaire in the correct way, please read this manual carefully. We suggest that this document is provided to the end user after the installation. This product may only be installed or repaired by a recognized installer. If the cable or any component would be damaged, please contact the supplier of the product for further assistance.

### **To observe while doing installation**

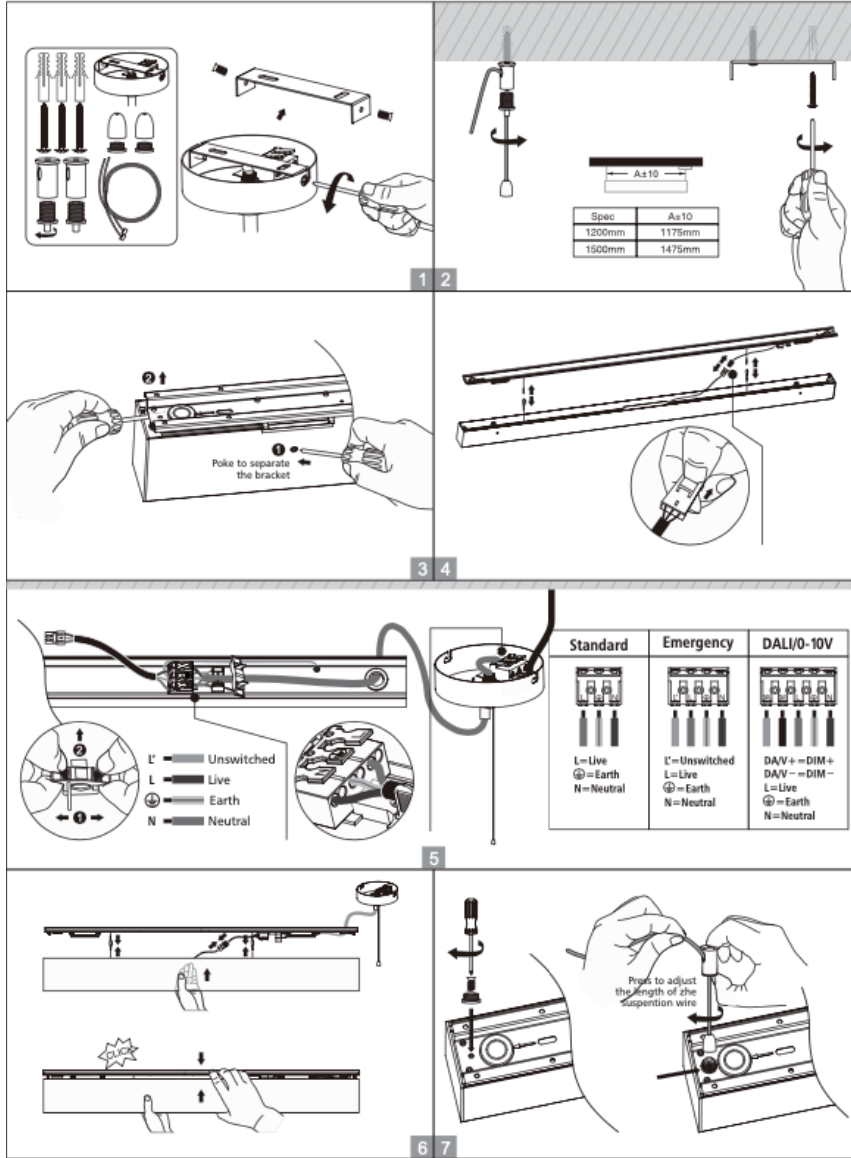
1. Beware of electric shocks.
2. Check all accessories when opening the box.
3. The power cable must not be connected with a low-voltage cable.
4. Make sure that cables and connectors are not subjected to any stretchable or torsional forces.
5. Do not remove the label on the luminaire or driver.

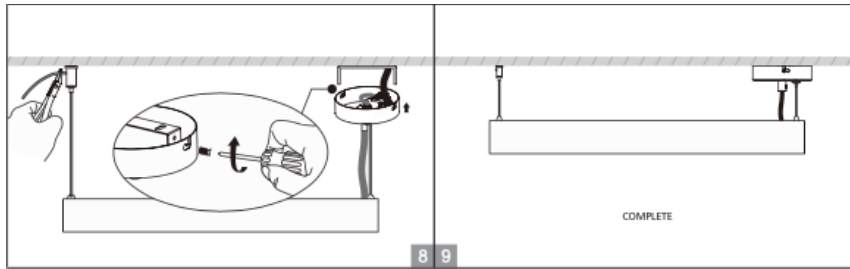
Warning! Keep children at a safe distance when installing luminaires. The luminaire has smaller components that can be swallowed by children, and never let children play with electric luminaires.

### **To observe while in usage**

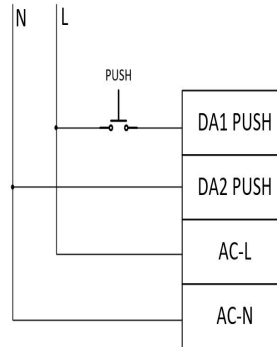
1. Always use the luminaire in the packaging where all components are intended for each other.
2. Before using the luminaire, check that the luminaire is not damaged during transport. If damage is detected, the luminaire must not be installed.
3. Maintenance of the system and / or luminaire must be carried out by a qualified electrician.
4. Do never cover the luminaire or the driver.
5. Unauthorized person must not disassemble and maintain the product. The warranty is canceled, and we have the right to refuse service if an unauthorized person has performed service / maintenance on the products.

# Assembly instruction





■ **Wiring Diagram of  
PUSH Dimming**



1. The PUSH switch shall be connected between AC-L and DA1 PUSH terminals and DA2 PUSH terminal shall be connected to AC-N.
2. AC-L and AC-N cannot be directly connected to DA1 PUSH and DA2 PUSH terminals.
3. Before AC power is on, please ensure that the PUSH switch is disconnected. After AC is powered on, PUSH operation can be performed.
4. Before AC power is off, please ensure that the PUSH switch is disconnected.

Wrong wiring method or wrong operation method may cause the damage of LED driver.

**Importer/contact info:**

**AJ Produkter AB  
Transportvägen 23  
302 30 Halmstad  
Sweden**

**[www.ajproducts.com](http://www.ajproducts.com)**