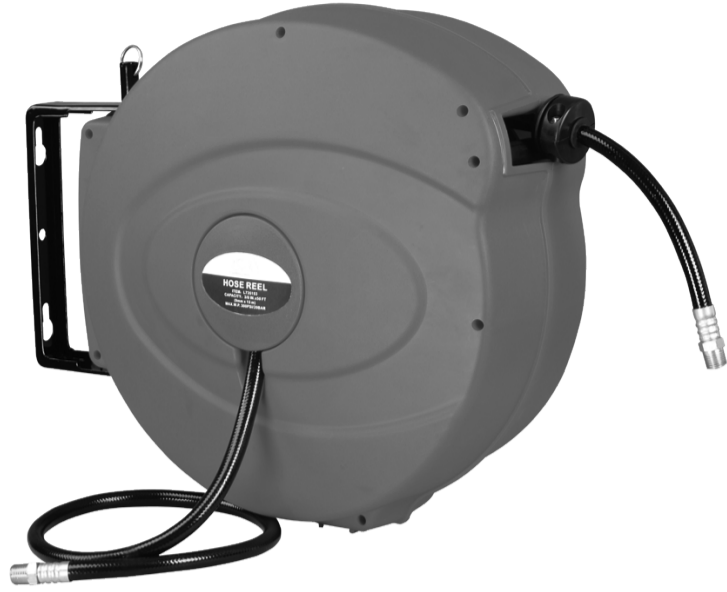


PLASTIC HOSE REEL



PLASTIC HOSE REEL

Hose Reel Series L733/L735/L737

Read the following precautions and instructions before you begin assembly or using. Failure to comply with these instructions could result in personal injury or property damage. Keep these instructions in a convenient location for future reference.

Specification

Type	Specification
L733103	3/8" hose, 33ft(10m) length Max.
L735153	3/8" hose, 50ft(15m) length Max.
L737203	3/8" hose, 65ft(20m) length Max.
L737154	1/2" hose, 50ft(15m) length Max.

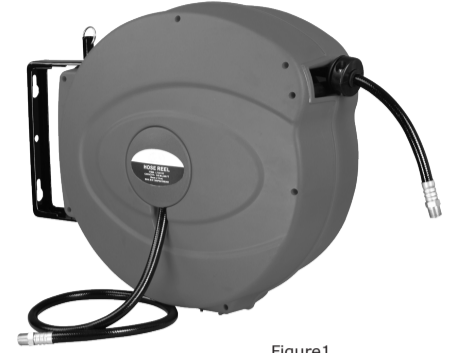


Figure1

Spring driven drum: for automatic rewind.
 Locking ratchet: to maintain the desired length of hose in use.
 Durable Construction-Made from high quality impact resistant polypropylene.
 Positive Latching Mechanism-Automatically locks hose at desired length.
 Composite Function-Less assembly required greater convenience.
 Latching Mode Switch- Choose free run or latching mode.
 Multi-position release ratchet, spring fully enclosed and lubricated.
 Free Standing Base-Reel sets level on the wall, ceiling for greater portability.
 Non-snag roller reduce hose wear.
 Light Weight-Plastic outer casing, ideal to reel hoses with air, fluid transmission.

Hose Reel Safety Precautions

1. Make sure incoming line pressure does not exceed the rated operating pressure for your model hose reel.
 2. Use proper eye protection when assembling and using the hose reel.
 3. Use soap and water when checking for leaks.
 4. Keep children away from the work area.
- Warning: Exposure of skin directly to pressurized air, or fluids could result in severe bodily injury.

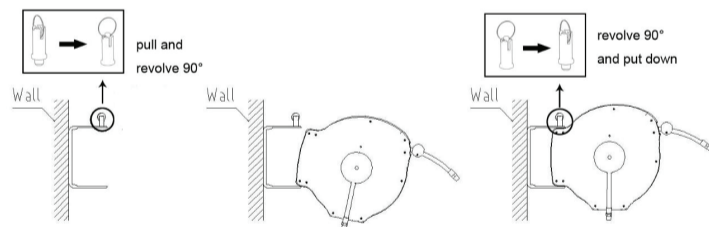
Installation of Reel

1. For overhead ceiling mounting: Install reel at most 10 feet (3m) above the floor.
2. You will need to purchase appropriate hardware for mounting your new reel.

1)The reel base has three 10.5mm (13/32") drilled holes for mounting on a suitable flat surface. Figure 2 is a template showing the correct location of the 3 mounting holes in the base.

1 OF 3

PLASTIC HOSE REEL



- 2)Using the three holes in the base, mount the reel in the desired location. Be sure to use appropriate hardware and tighten securely.
3. Apply Teflon tape or pipe sealant to supply line threads, attach to reel inlet and tighten. The other end of incoming line can now be connected to desired supply source.
- 4.Apply Teflon tape or pipe sealant to outlet fitting on reel hose, then attach to desired tool, or nozzle. Check connection for leakage, also check hose reel for correct operation. See: Operation section.
5. If hose stopper adjustment is required, pull hose from reel and allow to latch at desired length. Loosen stopper bolts, and slide stopper to a position close to the hose guide. Tighten stopper bolts, and unlatch the reel.

Operation

- 1.Check reel for correct operation by slowly pulling out the hose. A "clicking" noise will be heard every half revolution of the drum.
- 2.Latching Mode Switch, when reel is in free run state, pull out the hose and allow it to retract after hearing the first second or third "click". After that, revolve the switch 90 degrees and put the switch down(Ref. Figure.1).
- 3.To unlatch the reel, turn the switch 180 degree counterclockwise, slowly pull out the hose until the "clicking" noise stops, and then let the hose retract until the hose stop rests against the hose guide.

Note: To avoid damage to the reel, always hold on to the hose while it is rewinding.
 4.Periodically check the hose condition for wear or damage, and check the swivel fitting for leakage. Replace any worn, damaged, or leaking parts.

Replacement of Swivel Seals

- 1.Open the cover(#21), take off fitting(#29), take off O-ring(#12), remove swivel body(#15) remove the O-ring(#8), and replace with new O-ring. Reassemble the swivel body, cover and fitting.
2. Re-connect inlet supply line. Check connections and swivel for leakage.

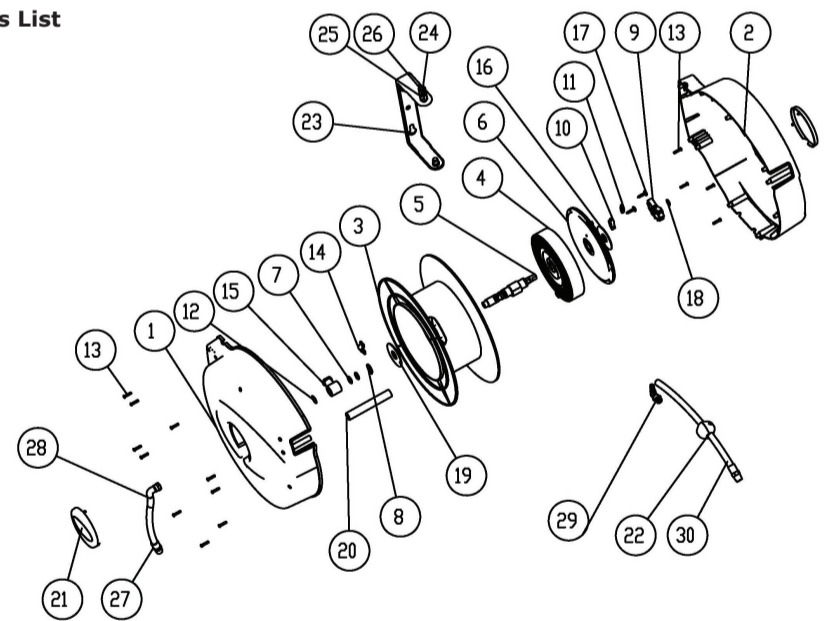
Limited Warranty

- 1.The manufacturer warrants this hose reel against defects in material and craftsmanship, for a period of 12 months from date of purchase.
- 2.Hose, if supplied with reel, O-rings, plastic rollers and rubber stopper are deemed to be normal wear items; not warranted.
- 3.Manufacturer's liability is limited to replacement or repair of defective material within the warranty period, when returned freight prepaid to the distributor or their designated service depot.
- 4.The warranty does not cover damage caused by accident, misuse or faulty installation.
5. The reel must be installed and maintained in compliance with the instructions.

2 OF 3

PLASTIC HOSE REEL

Parts List



No.	Description	QTY	No.	Description	QTY
1	Case	1	16	Plain washer	1
2	Case	1	17	Screw	2
3	Plate body	1	18	Ring	1
4	Spring	1	19	Plain washer	1
5	Main axis	1	20	Roller	1
6	Spring cover	1	21	Cover	1
7	O-ring	2	22	Locking block	1
8	O-ring	1	23	Bracket	1
9	Ratchet plate	1	24	Pin	1
10	Ratchet	1	25	Press spring	1
11	Return Spring	1	26	Hoop	1
12	O-ring	1	27	Hose	1
13	Screw	10	28	Bent fitting	1
14	3/8"check	1	29	Bent fitting	1
15	Swivel body	1	30	Hose	1

3 OF 3